

# Motorcycle Tourer's Forum

## STADIUM 1500 BBG

### RIDE INFORMATION AND CHECKPOINTS



#### CHECK-IN & RIDE START:

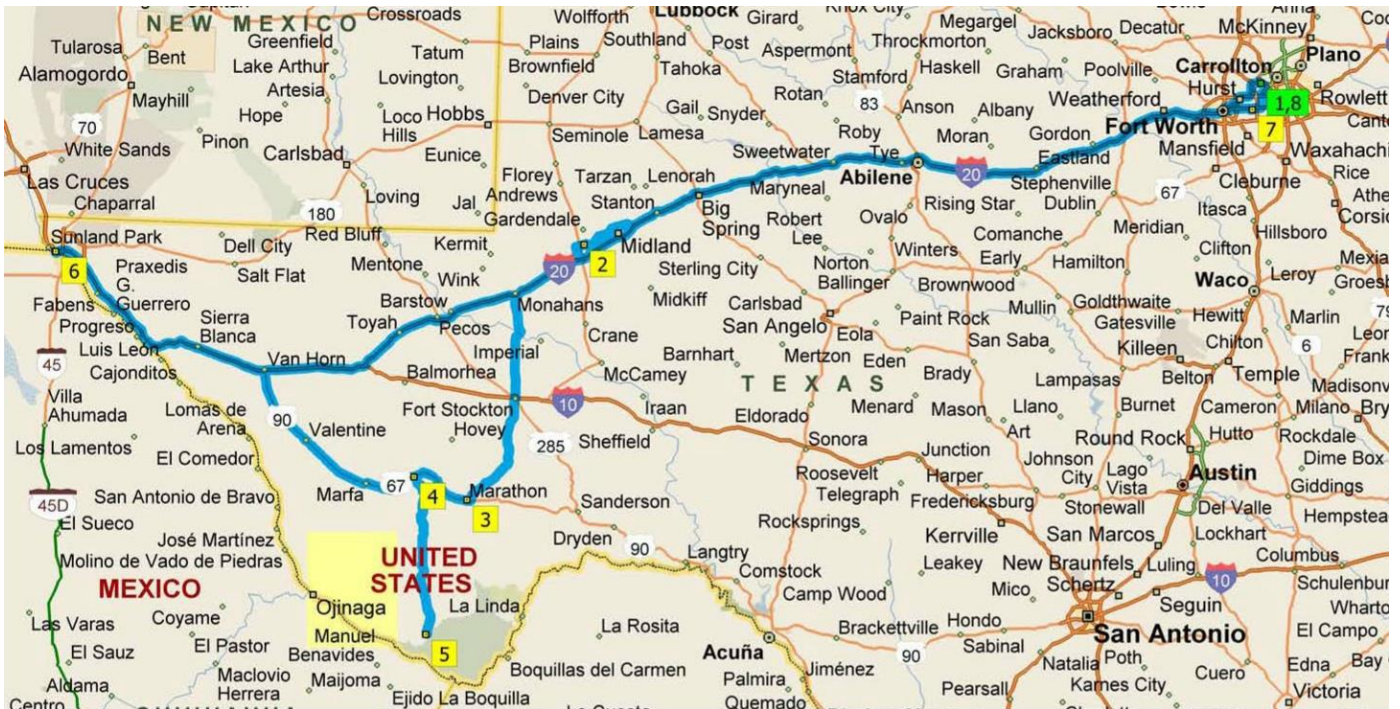
Rider check-in and the Ride Start are located at the Shell gas station / Whataburger / Convenience store located at the Freeport Parkway exit off Highway 114 in Irving, TX at the north end of the DFW airport. This is the only gas station at the Freeport Parkway exit off Highway 114. The gas prices are a rip-off so I would suggest getting gas elsewhere before you arrive. **The GPS coordinates for the station are ➔**

(N32° 55.240' W97° 01.206')

Check-in begins at **5:00am, Saturday, April 27th**. The check-in process consists simply of signing a **Liability Waiver** and picking up your **Rider Flag**. Following a short **Riders Meeting at 6:00am** in the parking lot, riders will be released to begin the ride.

**Emergency contact number** – Cliff Wall (214) 616-7327

## GENERAL RIDE INSTRUCTIONS:



The roads highlighted on the map are an example of a route. You may take any route you choose but **the numbered checkpoints must be visited in order**. “Jerry World” (AT&T Stadium – Stop #7) is the last stop before returning to the finish. Remember, all required checkpoint locations **MUST** be visited and documented **in order** to be a Finisher! **There are no exceptions!**

To **document your visit to each checkpoint** simply take a picture with your cell phone camera of the checkpoint according to the information in the **CHECKPOINT INSTRUCTIONS** below, making sure your **Rider Flag is clearly visible in each picture**. (See “Scoring” below)

\*\*\*\*\*  
**CAUTION !!!** The checkpoint in **Terlingua** requires that **your motorcycle** also appear in the picture. This is required to help us verify that you rode your motorcycle to complete the full route.

\*\*\*\*\*  
**SCORING !!!** Using your smart phone, please email each picture immediately after you take it to: [cwall@huitt-zollars.com](mailto:cwall@huitt-zollars.com) . (No more than three pics of each checkpoint please.) We will be verifying these through the night in order to complete the ride validation upon your return to the finish.

\*\*\*\*\*



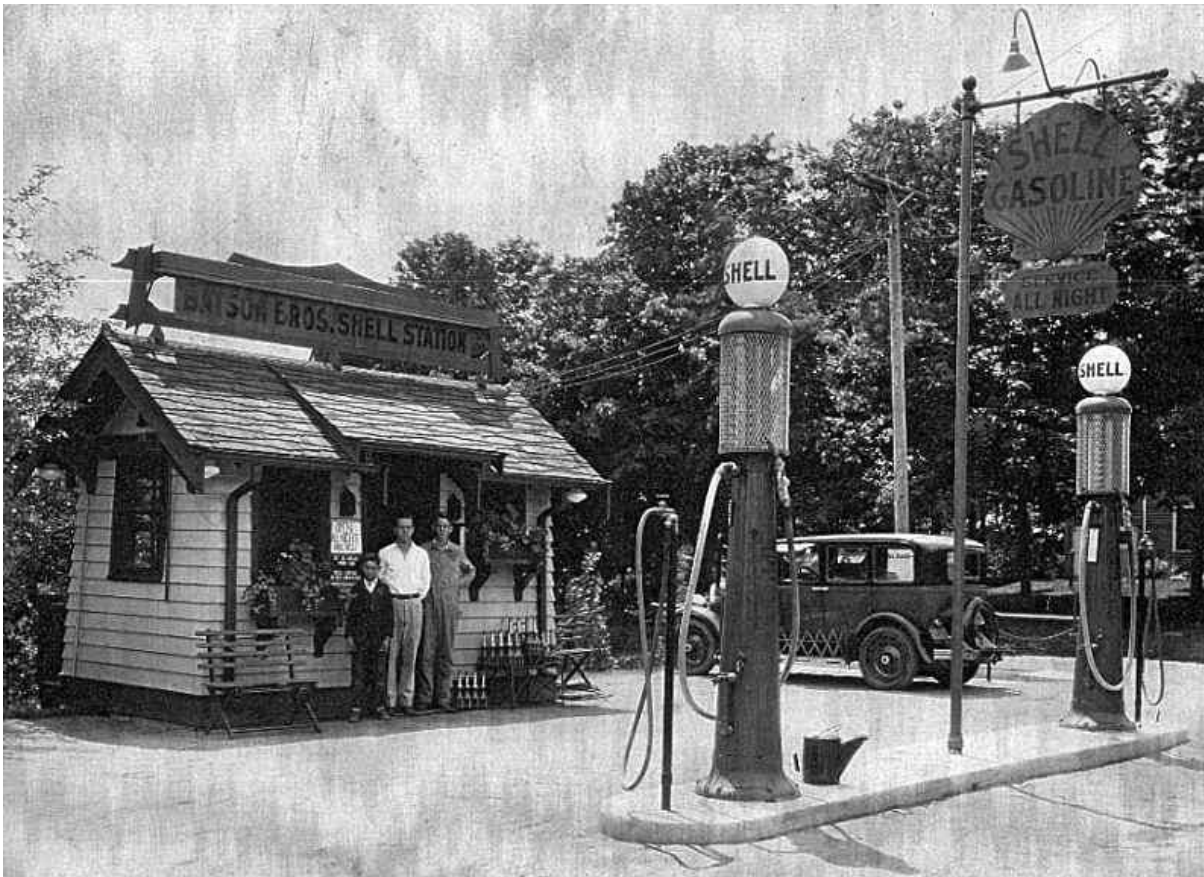
## CHECKPOINT INSTRUCTIONS

(All checkpoints **MUST** be ridden to in order, no exceptions!)

(Checkpoint numbers refer to the locations displayed on the map on the previous page.)

1. **START** – Shell gas station / Whataburger / Convenience store located at the Freeport Parkway exit off Highway 114, in Irving, TX just north of the DFW airport.

(N32° 55.240' W97° 01.206')



**Just kidding! It's a real Shell station with 24 hour pay at the pump. Relax...**

Following a short **Riders Meeting at 6:00am** in the parking lot, riders will be released to begin the ride. No picture is required, but feel free to snap away before you head out.

2. **Ratliff Stadium** –North Grandview & Yukon, Odessa, Texas 79765

(N31° 55.046' W102° 21.778')

A fall Friday night in Odessa, Texas means Texas High School Football. In Odessa they play in a venue that has been called the "Epicenter of Texas High School Football". Ratliff Stadium is the home field of both the Odessa High School Bronchos and the Odessa Permian Panthers, but it was its association with the Permian Panthers and the book and movie (and now television show) "Friday Night Lights" that elevated it to legendary status. Travelers who know little if anything about Texas football will look up Friday Night Lights on the internet and make their way to this field. In October 2001 USA Today picked Ratliff Stadium as one of the top 10 High School Football Stadiums in the U.S.

**DOCUMENTATION REQUIREMENT:**

Take a picture of the "Ratliff Stadium" concrete sign facing East Yukon Rd. near the tree lined entrance to the stadium making sure your Rider Flag is clearly visible in the picture.



3. **Marathon Field** – Avenue D and 7<sup>th</sup> St., Marathon, Texas 79842

(N30° 12.693' W103° 14.645')

The ultra-tiny town of Marathon, Texas is best known for its Gage Hotel, a great place to stay and an even better place to have a drink and a good meal. But you don't have time for that today. As you motor through town, take a right on Avenue D instead of stopping at the Gage and take a gander at where the Marathon Mustangs sometimes play football. I say sometimes because the team is on again, off again, depending on which family moves into town and which family moves out. Marathon often has difficulty even fielding a team for Six Man Football.

**DOCUMENTATION REQUIREMENT:**

Take a picture of the stands at the Marathon football stadium making sure your **Rider Flag** is clearly visible in the picture.





4. **Jackson Field** – S Cockrell at Murphy, Alpine, Texas 79830

(N30° 21.500' W103° 39.248')

Jackson Field was opened in 1929. Former longtime Big Bend area rancher J.D. Jackson donated the land for the stadium that would become the home of the Sul Ross Lobo football program. Jackson Field has played host to numerous football championships including the barn-burning 1982 playoff game between Sul Ross and William-Jewell in which the Lobos fell in overtime by a 44-43 final score.

I know what you're thinking. How did I miss that one? ☺

**DOCUMENTATION REQUIREMENT:**

Take a picture of the sign at the entrance gate to Jackson Field making sure your **Rider Flag** is clearly visible in the picture.



5. **Road Runner Field** – Road Runner Circle, Terlingua, Texas 79852

(N29° 18.796' W103° 32.383')

The end of the LD riding world is at hand and it is evidenced in the massive developments in Terlingua. Long held as a closely guarded secret hideaway for dropouts and miscreants, Terlingua is becoming civilized. First they added pay at the pump gas. Then cell phone towers popped up so you could call mom to tell her you made it safely to the Chili Cook-off. What's next? Well, football of course!

The "field" at Terlingua is taking shape. True, it is now nothing more than rolled pea gravel with a pile of weeds here and there, but you can't mistake the top quality asphalt tract with its' formed concrete borders. As soon as Pepsi or Coke donates the money for artificial turf and a scoreboard, sell your motorcycle and move to Alaska. The Iditarod will be all that's left, until we screw it up too.

**DOCUMENTATION REQUIREMENT:**

Take a picture of the track at Terlingua making sure to include some of the pea gravel field in your picture. This picture you can take with you to Alaska when you move. However, to document your visit to Terlingua, take a picture of the **Big Bend Library building** directly across from the Terlingua field, making sure **BOTH YOUR BIKE AND YOUR RIDER FLAG, ALONG WITH THE WORDS "BIG BEND LIBRARY"** are clearly visible in the picture.





6. **R.R. Jones Stadium** – El Paso High School, 800 E. Schuster Ave., El Paso, Texas 79902

(N31° 46.401' W106° 29.442')

R. R. Jones Stadium was built in 1916 and was the site of the very first Sun Bowl and is home to El Paso High and Cathedral football teams. It always offers fantastic views of downtown El Paso from the stadium seats. Jones was the first major concrete stadium built in the country, opening in 1916 with a seating capacity of 12,000. The stadium was constructed at a cost of \$500,000.

The school is nicknamed ""The Lady on the Hill"" because it sits on a mountainside at the foot of the Franklin Mountains. It overlooks central El Paso and its border with Ciudad Juarez, Mexico. The school actually wraps around the stadium and semicircular steps lead from the field directly to the main entrance of the school. Combined, they take up four city blocks.

General John J. 'Black Jack' Pershing once rode his horse into Jones Stadium to help celebrate the end World War I. Due to crumbling concrete, the stadium was rebuilt to original specifications in 1993.

**DOCUMENTATION REQUIREMENT:**

Take a picture of the El Paso High School sign next to the school building on Schuster Avenue, making sure your **Rider Flag** is clearly visible in the picture.





7. **Jerry World (AT&T Stadium)** – 1104 E Randol Mill Rd, Arlington, Texas 76011

(N32° 45.000' W97° 05.744')

The only thing bigger in Texas football than AT&T Stadium is Jerry Jones' ego. The iconic AT&T Stadium is both home to the Dallas Cowboys and a monument to the excess that is Jerry Jones. The "Death Star", as local sports talk commentators immediately dubbed it, has hosted numerous events including high school football championships, the Final Four, the Super Bowl, the NBA All Star Game, the Rolling Stones and many other big name acts. We just didn't feel right leaving out a stop at Jerry World, although, if he could, Jerry would find a way to charge us for the picture!

**DOCUMENTATION REQUIREMENT:**

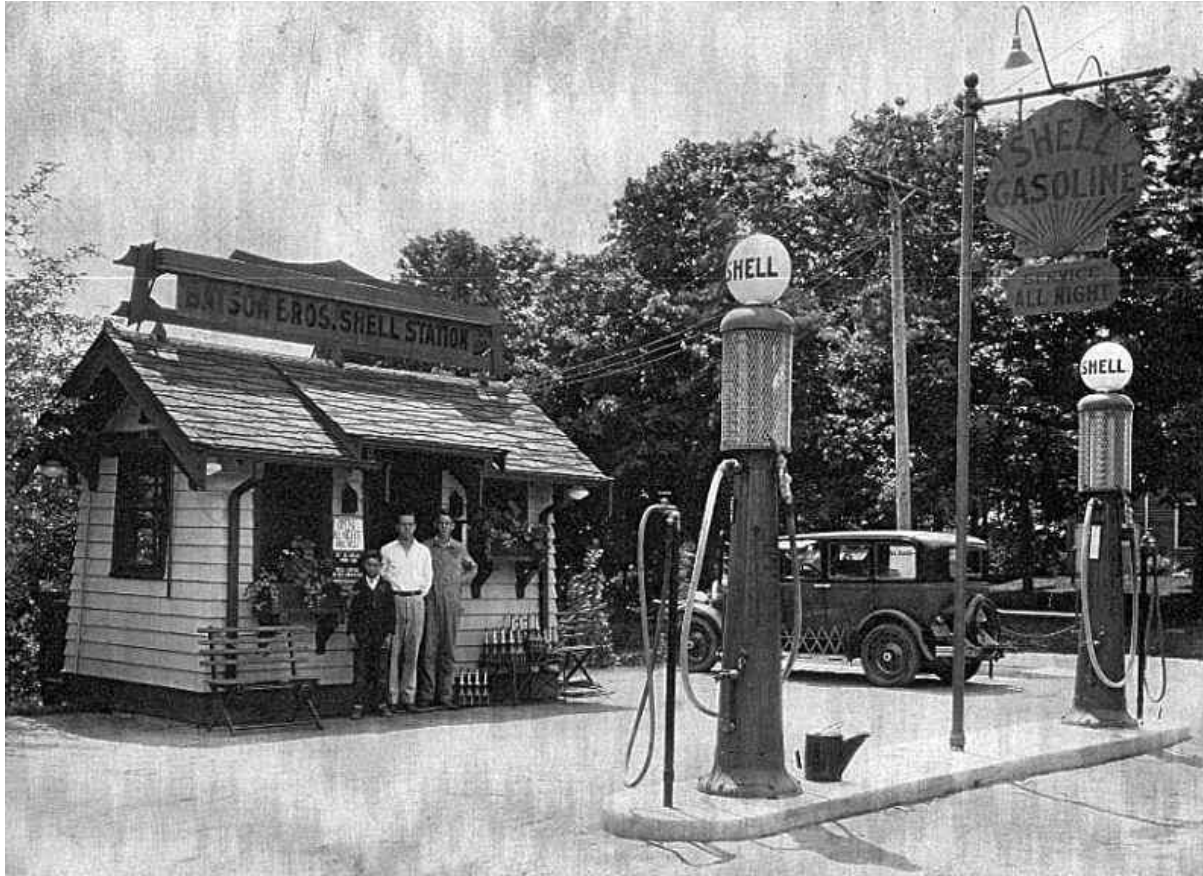
Take a picture of AT&T Stadium from any angle you wish, making sure your Rider Flag is clearly visible in the picture.

*Hint: There is a big Walmart parking lot across from the stadium on East Randol Mill Rd that provides a safe place to stop your bike.*



8. **FINISH** – Shell / Whataburger - Freeport Parkway exit, Highway 114, Irving, TX

(N32° 55.240' W97° 01.206')



Just kidding! It's a real Shell station with 24 hour pay at the pump. Relax...

**FINISH:** Complete your ride by checking in with Ride Coordinator, Cliff Wall, at the Shell gas station / Whataburger / Convenience store located at the Freeport Parkway exit off Highway 114, at the same gas station you started the ride from. This is the only gas station at the Freeport Parkway exit off Highway 114. You can't miss it unless you're looking for the station in the picture above. The GPS coordinates for the station are ➔

(N32° 55.240' W97° 01.206')

\*\*\*\*\*  
\*\*\*\*\*