

Motorcycle Tourer's Forum

STADIUM 1000

RIDE INFORMATION AND CHECKPOINTS



CHECK-IN & RIDE START:

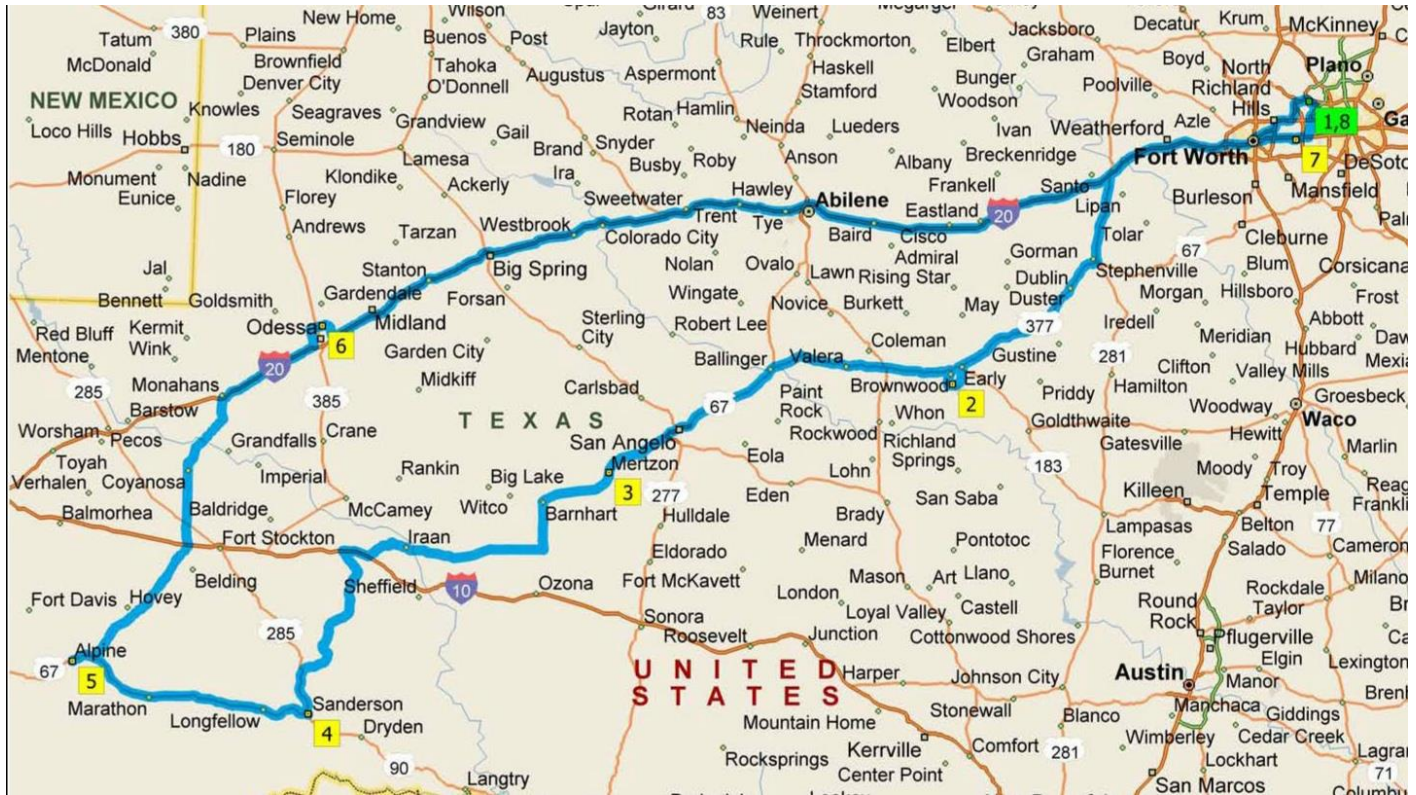
Rider check-in and the Ride Start are located at the Shell gas station / Whataburger / Convenience store located at the Freeport Parkway exit off Highway 114 in Irving, TX at the north end of the DFW airport. This is the only gas station at the Freeport Parkway exit off Highway 114. The gas prices are a rip-off so I would suggest getting gas elsewhere before you arrive. **The GPS coordinates for the station are ➔**

(N32° 55.240' W97° 01.206')

Check-in begins at **5:00am, Saturday, April 27th**. The check-in process consists simply of signing a **Liability Waiver** and picking up your **Rider Flag**. Following a short **Riders Meeting at 6:00am** in the parking lot, riders will be released to begin the ride.

Emergency contact number – Cliff Wall (214) 616-7327

GENERAL RIDE INSTRUCTIONS:



The roads highlighted on the map are an example of a route. You may take any route you choose but **the numbered checkpoints must be visited in order**. “Jerry World” (AT&T Stadium – Stop #7) is the last stop before returning to the finish. Remember, all required checkpoint locations **MUST** be visited and documented **in order** to be a Finisher! **There are no exceptions!**

To **document your visit to each checkpoint** simply take a picture with your cell phone camera of the checkpoint according to the information in the **CHECKPOINT INSTRUCTIONS** below, making sure your **Rider Flag is clearly visible in each picture**. (See “Scoring” below)

CAUTION !!! The checkpoint in **Alpine** requires that **your motorcycle** also appear in the picture. This is required to help us verify that you rode your motorcycle to complete the full route.

SCORING !!! Using your smart phone, please email each picture immediately after you take it to: cwall@huitt-zollars.com . (No more than three pics of each checkpoint please.) We will be verifying these through the night in order to complete the ride validation upon your return to the finish.

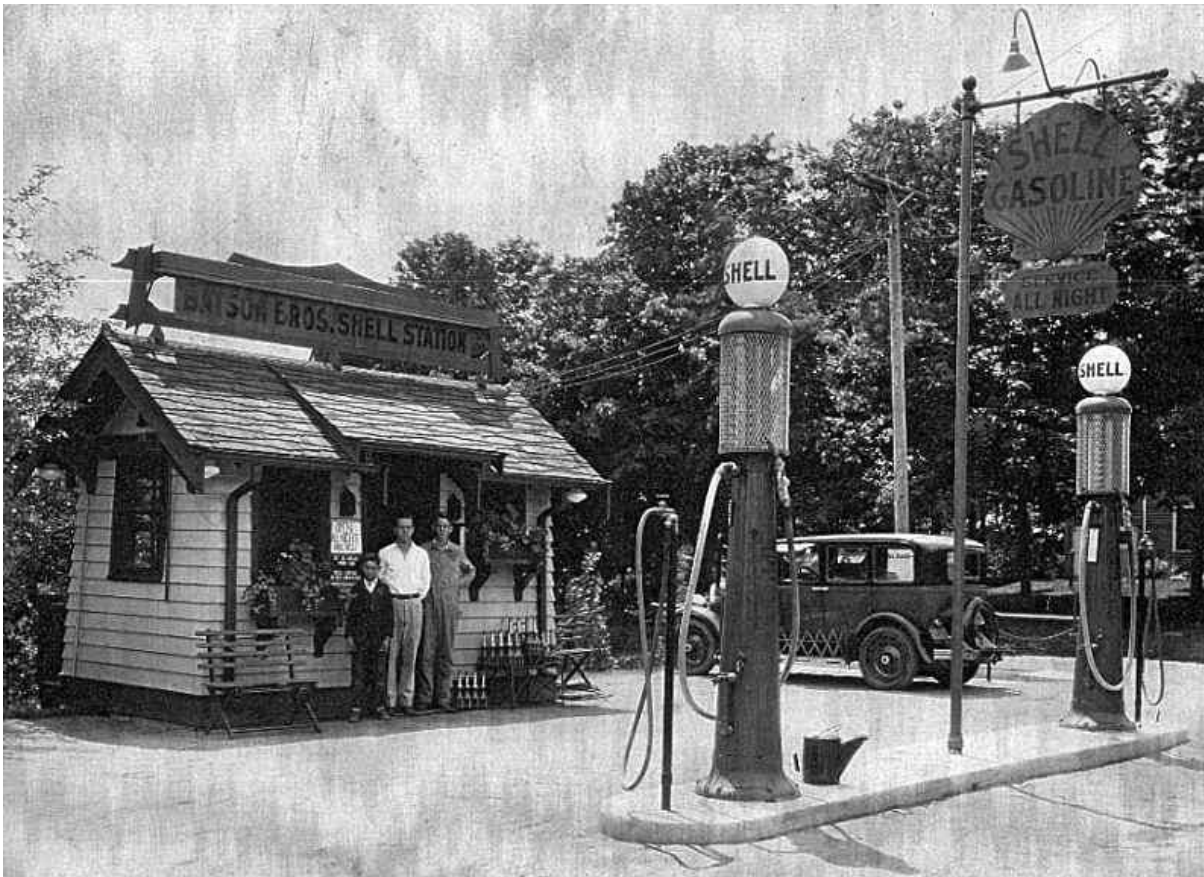
CHECKPOINT INSTRUCTIONS

(All checkpoints **MUST** be ridden to in order, no exceptions!)

(Checkpoint numbers refer to the locations displayed on the map on the previous page.)

1. **START** – Shell gas station / Whataburger / Convenience store located at the Freeport Parkway exit off Highway 114, in Irving, TX just north of the DFW airport.

(N32° 55.240' W97° 01.206')



Just kidding! It's a real Shell station with 24 hour pay at the pump. Relax...

Following a short **Riders Meeting at 6:00am** in the parking lot, riders will be released to begin the ride. No picture is required, but feel free to snap away before you head out.

2. **Gordon Wood Stadium** – 3206 Milam Drive, Brownwood, TX 76801

(N31° 40.029' W98° 58.783')

The football stadium where the Brownwood Lions tangle with worthy foes on Friday evenings each fall is named after legendary high school football coach Gordon Wood. Wood served as a head football coach for forty-three seasons for a total of seven Texas towns, winning or sharing twenty-five district championships and nine state championships. But Wood is most remembered for creating a juggernaut football powerhouse here in Brownwood where he served as head coach from 1960 to 1985. During his reign at Brownwood he won seven of his nine state titles, toppling all comers in 1960, 1965, 1967, 1969, 1970, 1978, and 1981. Brownwood became so dominate during this era that it became almost impossible to win a state championship in their division without beating the Lions along the way.

The great Alabama coach Paul “Bear” Bryant once replied when asked why he left Texas A&M for the Alabama job, “I had to leave Texas. As long as Gordon Wood was there, I could never be the best coach in the state.”

DOCUMENTATION REQUIREMENT:

Take a picture of Gordon Wood Stadium, making sure your Rider Flag and the words “Gordon Wood Stadium” (located on the back of the press box at the top of the stadium) are clearly visible in the picture. This picture was taken from the visitor press box side but both press boxes have the same wording and either will work for the picture.



3. O.K. Wolfenbarger Field – E. Oak at Highway 67, Mertzon, Texas 76941

(N31° 15.930' W100° 48.965')

The tiny town of Mertzon, TX is home to the Irion County Hornets. In these parts people start to become few and far between. Irion County had a population of 1,599 as of the 2010 census and thus has only one high school for the entire county and it resides in Mertzon, the county seat (pop. 788 as of 2013). The Irion County Hornets do battle on Friday nights in this well maintained, yet small, rural football stadium.

Across the highway from the stadium is a small roadside park with ample shade to rest your weary bones for a spell. Caution is advised however, as it has been known to disable the starter on certain American made motorcycles passing through town. For the full story, ask assistant Ride Master Cliff Wall. The full tale involves rope, pulling and pushing a bike in frigid weather, and lots of curse words.

DOCUMENTATION REQUIREMENT:

Take a picture of the sign that reads “Irion County Hornets” woven into the fence facing the highway making sure your Rider Flag is clearly visible in the picture. There is a safe place to pull off the road on Oak Ave. which is to your right as you approach the stadium from Hwy 67. Please do not park on the shoulder of the highway as this can be a busy road.



4. **Eagle Field** –301 W Mansfield St., Sanderson, Texas 79848

(N30° 08.752' W102° 23.964')

The Sanderson Eagles represent the purest essence of the love of football in the state of Texas. So what do you do if you live in a small west Texas town where the school population is so small that fielding an eleven man football team would require suiting up the dads of the players? The solution is strikingly simple – cut the team down to six players. From this kind of thinking was born the phenomenon known as “Six Man Football”, and it is one of the most entertaining versions of the game on the planet.

Teams who participate at the six man level have been known to travel hundreds of miles to get to another town that is equally people challenged, in order to have a game. Districts can consist sometimes of only a few teams with each team playing each other twice. The field is shortened to 80 yards from the traditional 100 and is made narrower so the players don’t run each other to death. Still, games can be decided by scores like 90 to 78.

DOCUMENTATION REQUIREMENT:

Take a picture of the sign at the entrance to Eagle Field making sure all four white pillars holding up the sign and your **Rider Flag** are clearly visible in the picture.



5. **Jackson Field** – S Cockrell at Murphy, Alpine, Texas 79830

(N30° 21.500' W103° 39.248')

Jackson Field was opened in 1929. Former longtime Big Bend area rancher J.D. Jackson donated the land for the stadium that would become the home of the Sul Ross Lobo football program. Jackson Field has played host to numerous football championships including the barn-burning 1982 playoff game between Sul Ross and William-Jewell in which the Lobos fell in overtime by a 44-43 final score.

I know what you're thinking. How did I miss that one? ☺

DOCUMENTATION REQUIREMENT:

Take a picture of the sign at the entrance gate to Jackson Field making sure **BOTH your bike and your Rider Flag** are clearly visible in the picture.



6. **Ratliff Stadium** –North Grandview & Yukon, Odessa, Texas 79765

(N31° 55.046' W102° 21.778')

A fall Friday night in Odessa, Texas means Texas High School Football. In Odessa they play in a venue that has been called the "Epicenter of Texas High School Football". Ratliff Stadium is the home field of both the Odessa High School Bronchos and the Odessa Permian Panthers, but it was its association with the Permian Panthers and the book and movie (and now television show) "Friday Night Lights" that elevated it to legendary status. Travelers who know little if anything about Texas football will look up Friday Night Lights on the internet and make their way to this field. In October 2001 USA Today picked Ratliff Stadium as one of the top 10 High School Football Stadiums in the U.S.

DOCUMENTATION REQUIREMENT:

Take a picture of the "Ratliff Stadium" concrete sign facing East Yukon Rd. near the tree lined entrance to the stadium making sure your Rider Flag is clearly visible in the picture.

NOTE: You may not be able take this picture if you arrive at or near game time and there is definitely a game on the night of the ride. As an alternative form of documentation we will accept a picture of the sign that reads "St. Elizabeth Ann Seton Catholic Church" at the corner of Grandview and Charles Walker Rd on the other side of the stadium. Make sure your flag is in the picture if you use this alternative.



7. **Jerry World (AT&T Stadium)** – 1104 E Randol Mill Rd, Arlington, Texas 76011

(N32° 45.000' W97° 05.744')

The only thing bigger in Texas football than AT&T Stadium is Jerry Jones' ego. The iconic AT&T Stadium is both home to the Dallas Cowboys and a monument to the excess that is Jerry Jones. The "Death Star", as local sports talk commentators immediately dubbed it, has hosted numerous events including high school football championships, the Final Four, the Super Bowl, the NBA All Star Game, the Rolling Stones and many other big name acts. We just didn't feel right leaving out a stop at Jerry World, although, if he could, Jerry would find a way to charge us for the picture!

DOCUMENTATION REQUIREMENT:

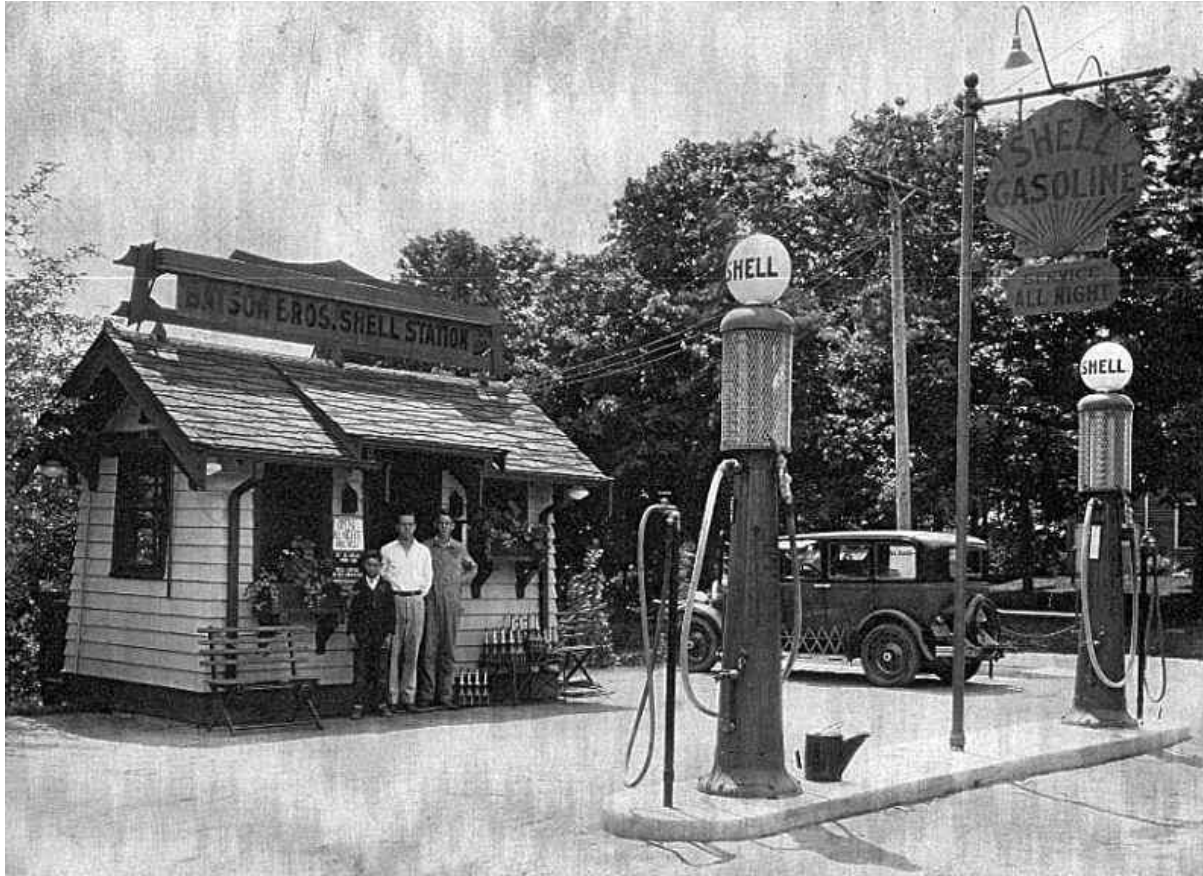
Take a picture of AT&T Stadium from any angle you wish, making sure your Rider Flag is clearly visible in the picture.

Hint: There is a big Walmart parking lot across from the stadium on East Randol Mill Rd that provides a safe place to stop your bike.



8. **FINISH** – Shell / Whataburger - Freeport Parkway exit, Highway 114, Irving, TX

(N32° 55.240' W97° 01.206')



Just kidding! It's a real Shell station with 24 hour pay at the pump. Relax...

FINISH: Complete your ride by checking in with Ride Coordinator, Cliff Wall, at the Shell gas station / Whataburger / Convenience store located at the Freeport Parkway exit off Highway 114, at the same gas station you started the ride from. This is the only gas station at the Freeport Parkway exit off Highway 114. You can't miss it unless you're looking for the station in the picture above. The GPS coordinates for the station are ➔

(N32° 55.240' W97° 01.206')

